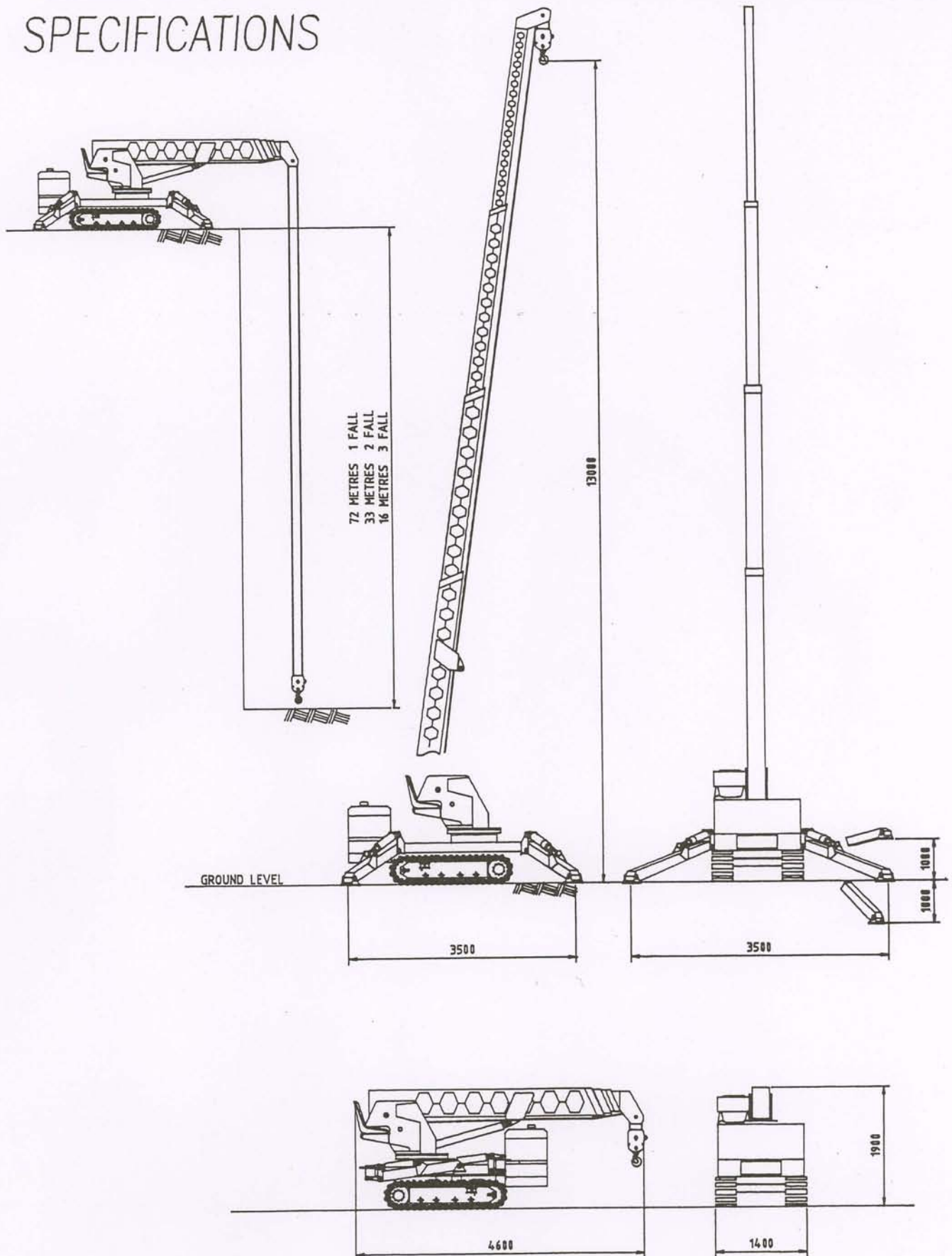


# LINMAC

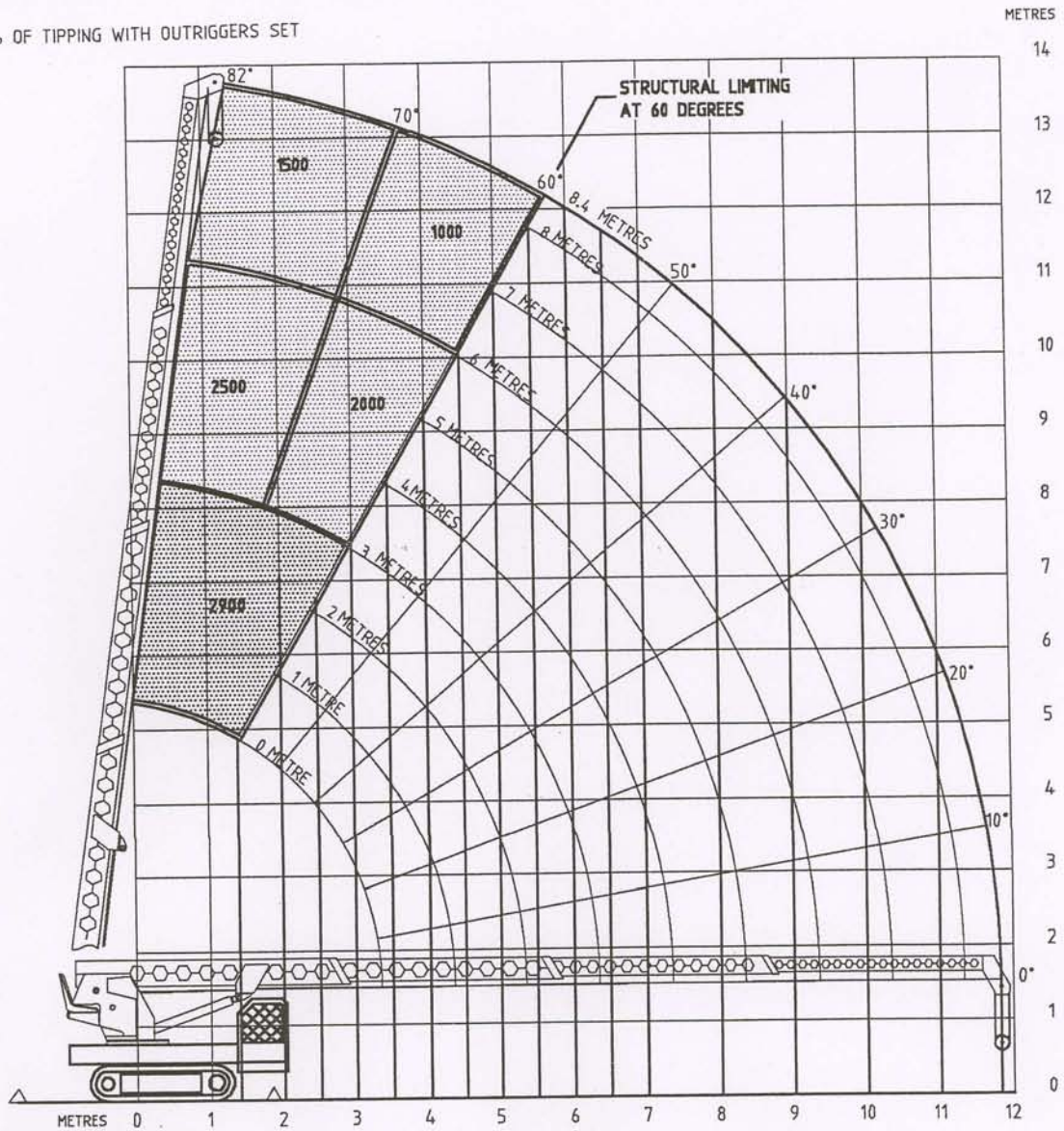
## CRAWLER CRANE

### SPECIFICATIONS



# CRAWLER CRANE LIFT & REACH CHART

AT 75% OF TIPPING WITH OUTRIGGERS SET



POWER BOOM CAPACITIES kg WITHOUT COUNTERWEIGHT

4500	3700	3000	2300	2200	2000	1600	1200	1000	900	800	640	460	380	330	310
------	------	------	------	------	------	------	------	------	-----	-----	-----	-----	-----	-----	-----

POWER BOOM CAPACITY kg COUNTERWEIGHT = 600 kg

4500	3700	3000	2300	2200	2000	1800	1500	1250	1100	1000	800	600	500	450	400
------	------	------	------	------	------	------	------	------	------	------	-----	-----	-----	-----	-----

FLY BOOM CAPACITIES

FLY BOOM OPERATIONAL RADIUS	4.5	5	7	9	11	12.5	14.95
RATED LOAD kg	600	500	375	250	200	200	165

## LIFT & CARRY CAPACITIES

MAXIMUM LIFT AND TRAVEL LOAD  
1200 kg AT 60°  
CAPACITIES RATED AT 60% OF TIPPING.  
IMPORTANT NOTES:  
ALL BOOMS MUST BE RETRACTED  
60° IS MAXIMUM LIFT ANGLE  
NO LIFTING OVER SIDE OF MACHINE  
WITHOUT USING OUTRIGGERS

REAR LIMITS

ANGLE	MAX WEIGHT
0°	800 kg
10°	820 kg
20°	870 kg
30°	940 kg
40°	1000 kg
50°	1100 kg
60°	1200 kg

